



2016 SAFETY BENCHMARKING REPORT

CONDUCTED BY THE

**NATIONAL ASSOCIATION OF
WATER COMPANIES**
2001 L STREET, N.W., SUITE 850
WASHINGTON, DC 20036

APRIL 2016

THE SURVEY WAS CONDUCTED FROM JANUARY – MARCH OF 2016 COLLECTING 2014 DATA.

910 CLOPPER ROAD, SUITE 210N
GAITHERSBURG, MARYLAND 20878
TEL: (240) 268-1262
ARI@ASSOCIATIONRESEARCH.COM

ARI Association
Research, Inc.

TABLE OF CONTENTS

INTRODUCTION	1
EXECUTIVE SUMMARY	2
CHARTS	3
METHODOLOGY & DESCRIPTION OF STATISTICS.....	8
SURVEY INSTRUMENT	APPENDIX A
STATISTICAL TABLES	APPENDIX B

INTRODUCTION

The National Association of Water Companies (NAWC) is the voice of the private water Industry, including the regulated drinking and waste water utilities. NAWC is the only organization representing this group of quality service providers, innovation drivers and responsible partners. NAWC represents companies of varying sizes, from large, investor-owned utilities to smaller companies that serve towns and small municipal entities. NAWC works to promote the private sector as a viable and highly effective solution to developing, financing, and managing water and wastewater projects and systems while ensuring sustainability challenges are met.

NAWC members have been at the forefront of water safety and security for years—well before the federal government or Congress mandated stringent measures. Private water utilities and contract operators in the U.S. have strong governance structures and compliance programs. Operating within largely voluntary frameworks, private water companies generate successful, innovative and cutting-edge approaches to providing consequence-based risk management practices to protect the communities they serve. The results of this survey show that NAWC members continue to be forward leaning in their approach to worker safety and water security. Every participant in the NAWC 2016 Safety Benchmarking Survey has a specific safety policy put in place by management. Additionally, each company has a written health and safety program that includes safety incident investigations and recommends corrective action.

Today, NAWC is pleased to present the results of the 2016 Safety Metrics Survey it conducted during January–March 2016. The NAWC Security and Safety Committee developed the parameters of the study in an effort to obtain information on the sector’s safety and security performance. This survey collected data for CY 2014. Survey information is only one part of the information gathering process and each company must ultimately make an independent decision as to how survey data will or will not be used.

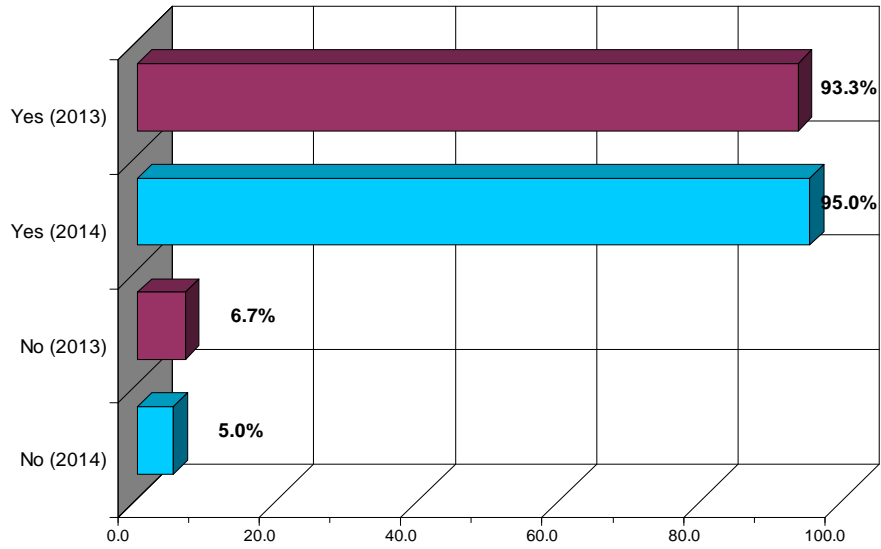
It should be noted that the survey results are subject to the limitations inherent in any survey questionnaire and the reported result should be taken into account with those limitations in mind. Recognizing these limitations is critical to an effective use of the survey results.

EXECUTIVE SUMMARY

The questions in the survey focused on the prevalence of health, safety and security programs at the responding companies, as well as incidence rates in 2014 using an OSHA metric as a definition.

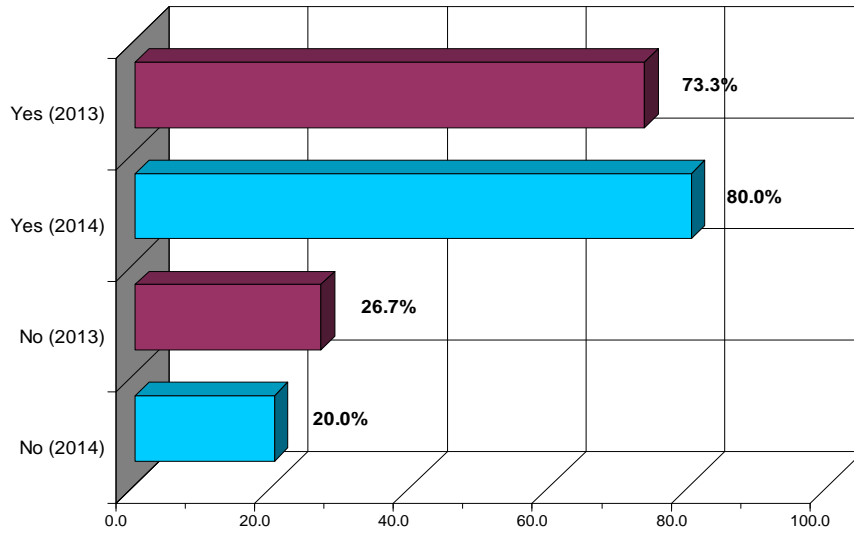
- Most respondents (90.0%) reported that they have a specific health and safety policy already in place. Additionally, over nine in ten (95.0%) of respondents noted that they have a health and safety program.
- More than eight in 10 respondents (85.0%) had a policy that clearly defines employees' accountability for workplace safety. Three-quarters (75.0%) of responding companies reported having a written health and safety program that includes disciplinary action for violations.
- More than nine in 10 respondents (95%) reported having a cybersecurity program/plan in place.
- Three-fifths (60%) of respondents were aware of the NIST cybersecurity framework.
- Over half of all respondents (56.3%) have already begun implementing elements of the NIST cybersecurity framework within their operations.
- Three-quarters of respondents (75.0%) noted that management sets goals and targets for safety performance and nearly four in five respondents (78.9%) reported that they have a safety committee.
- Seven-tenths of all respondents (70.0%) reported that they spend more than 10 hours annually on health and safety training for employees (excluding office/clerical); an increase from the 66.7% reported the same in the previous report. Moreover, three-fifths of responding companies (60.0%) noted that they have a contractor safety program.
- The DART Incidence Rate average reported by respondents for all operations in 2014 was 2.9.
- The Recordable Incidence Rate average (RIR) (4.8) for all operations was lower than the government rate of 5.5 for 2014.
- The regulated operations reported slightly higher incidence rates in 2014 (3.3) than contract operations (3.0).
- The Lost Time Incidence Rate average reported by all respondents was 2.2 for 2014.

COMPANY HAS HEALTH AND SAFETY PROGRAM (2013 & 2014)



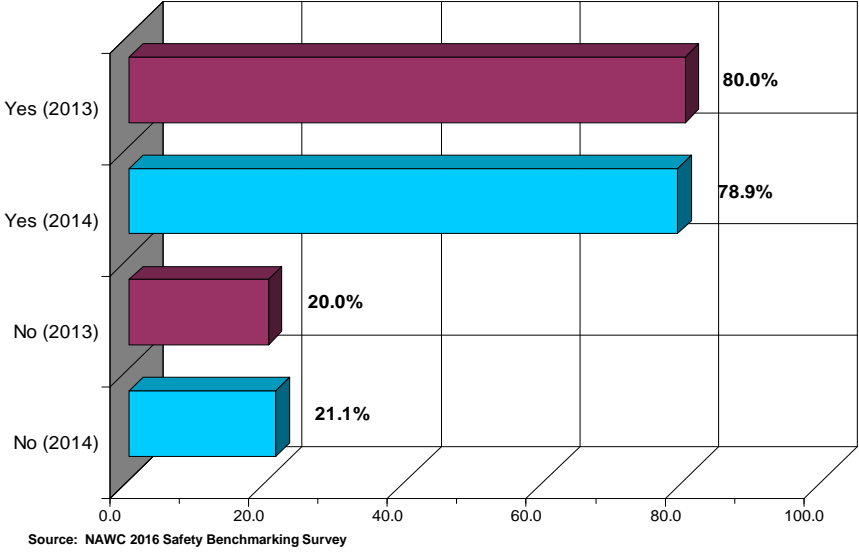
Source: NAWC 2016 Safety Benchmarking Survey

DEDICATED BUDGET FOR HEALTH AND SAFETY PROGRAM (2013 & 2014)

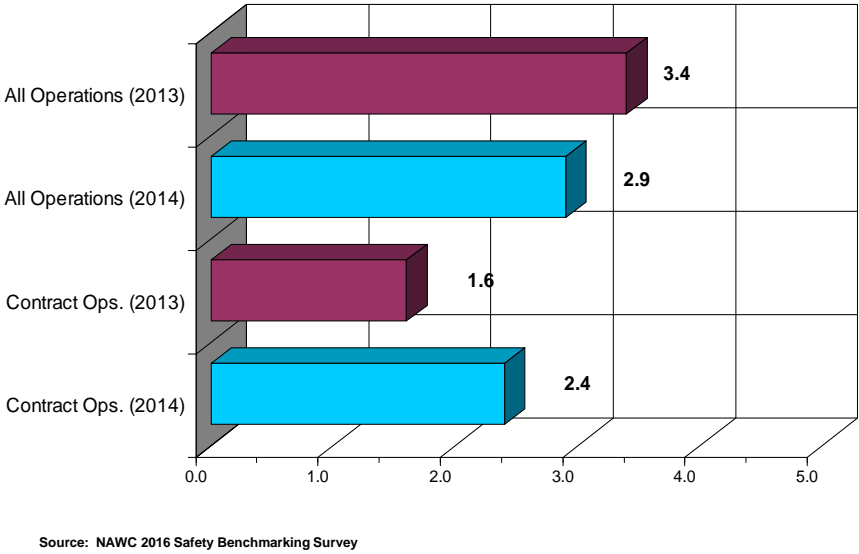


Source: NAWC 2016 Safety Benchmarking Survey

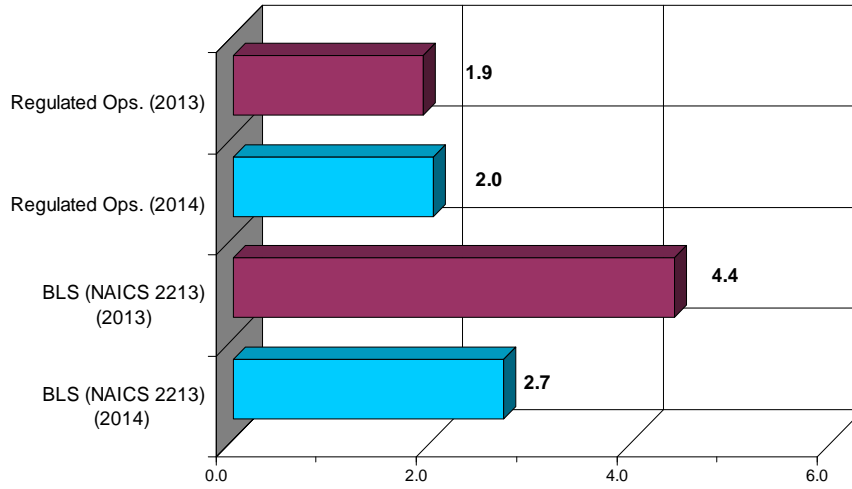
HAVE A SAFETY COMMITTEE (2013 & 2014)



DART INCIDENCE RATES (2013 & 2014)

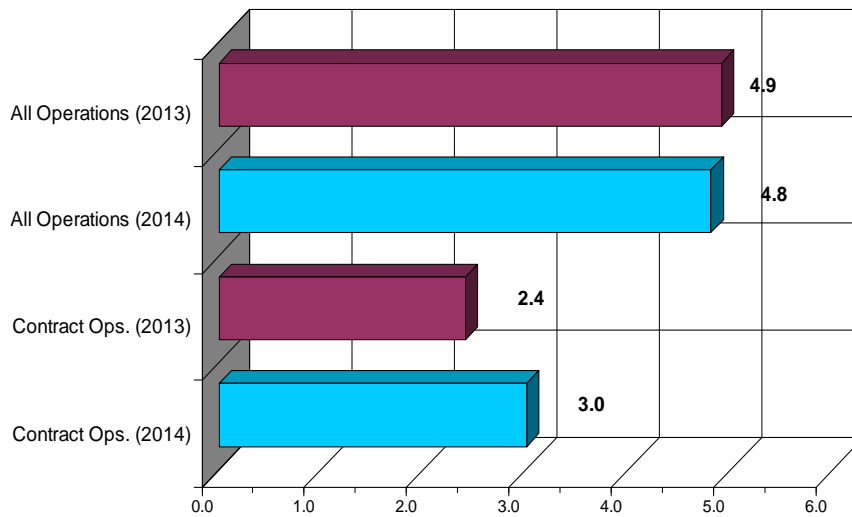


DART INCIDENCE RATES (2013 & 2014)



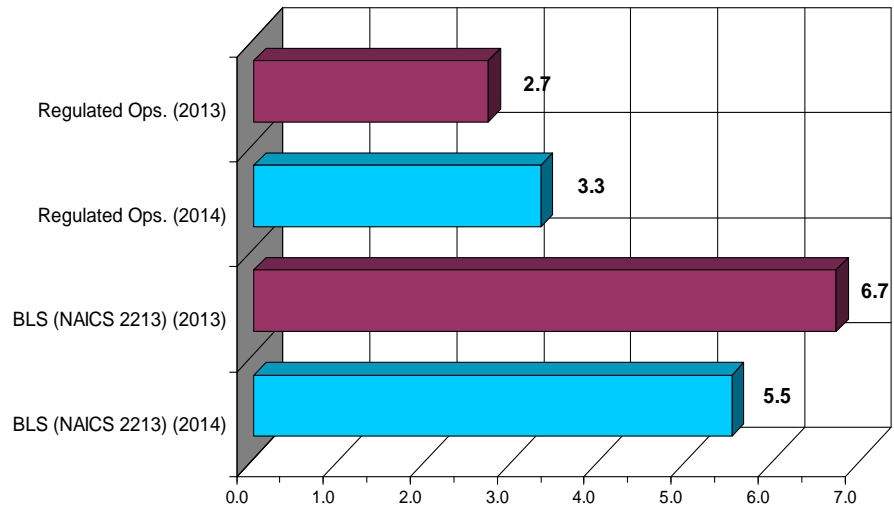
Source: NAWC 2016 Safety Benchmarking Survey

RECORDABLE INCIDENCE RATES (2013 & 2014)



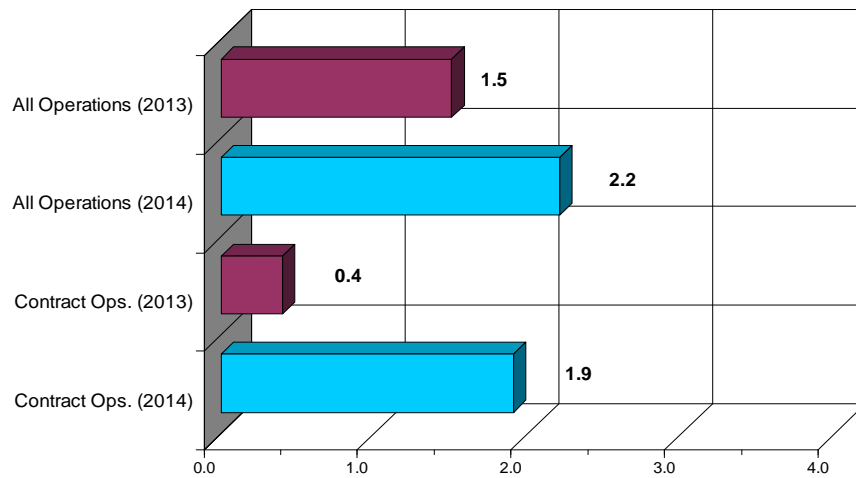
Source: NAWC 2016 Safety Benchmarking Survey

RECORDABLE INCIDENCE RATES (2013 & 2014)



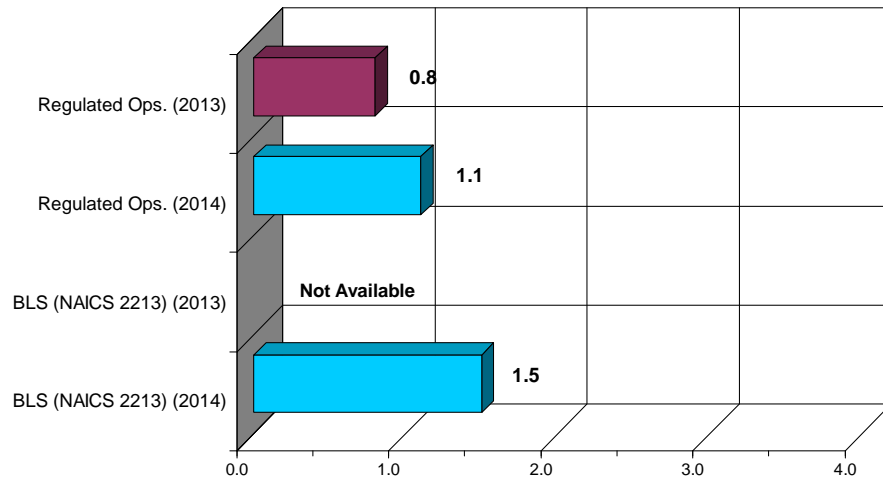
Source: NAWC 2016 Safety Benchmarking Survey

LOST TIME INCIDENCE RATES (2013 & 2014)



Source: NAWC 2016 Safety Benchmarking Survey

LOST TIME INCIDENCE RATES (2013 & 2014)



Source: NAWC 2016 Safety Benchmarking Survey

METHODOLOGY & DESCRIPTION OF STATISTICS

A survey invitation was sent to 51 NAWC member companies in January 2016. Of these members, 20 companies completed the survey, resulting in a response rate of 39.2%, similar to the 2014 Survey. This report is based on data from those 20 responding companies.

Association Research, Inc., an independent survey research organization located in Gaithersburg, Maryland, conducted the Web-based survey, analyzed the findings, and prepared this report. In this report, the individual data from participating companies, are kept anonymous.

DESCRIPTION OF STATISTICS AND FORMATTING CONVENTIONS

Quartiles: In tables that report rates, responses are described by three quartiles: the first quartile, the median, and the third quartile. These tables show the value of the boundary at the 25th, 50th, or 75th percentiles of a frequency distribution divided into four parts, each containing a quarter of the population. For example, when all reported values are listed from highest to lowest, the third quartile identifies the point on the list that is equal to or greater than 75 percent (three quarters) of the reported values and equal to or less than 25 percent (one quarter).

Median (midpoint): The median identifies the point in the distribution of reported values that is equal to or larger than one-half of reported values and equal to or smaller than one-half—that is, the mid-point.

In general, the more values that are reported, the more accurately quartiles estimate the distribution of values among all NAWC members.

Mean (average): The sum of all values divided by the number of values.

It should be noted that if the mean exceeds the median, it is because high values will affect the calculations. It is also possible, especially with a small number of values, for the mean to exceed the third quartile.

Percentages in some tables and some graphs may not sum to exactly 100% due to rounding.

Experience Modification Rate (EMR): A computation that compares a company's annual losses in insurance claims against its policy premiums over a three year period, excluding the most current year.

Other formulas useful in understanding tabular information presented in this report are:

FORMULAS FOR RATE CALCULATIONS	
(1) DART Rate	Total Number of CASES with Days Away from Work, Restrictions or Transfers X 200,000 ----- Total Hours Worked for Calendar Year
(2) Lost-Time Severity Rate	Total Number of DAYS Away from Work X 200,000 ----- Total Hours Worked for Calendar Year
(3) Lost-Time Rate	Total Number of Days Away from Work CASES X 200,000 ----- Total Hours Worked for Calendar Year
(4) Recordable Incidence Rate	Total Number of all OSHA Recordable CASES X 200,000 ----- Total Hours Worked for Calendar Year <i>Note: Includes Medical Treatment, Restrictions, and Days Away from Work (Lost-Time) cases.</i>

APPENDIX A



2015 Safety Metrics Survey

(DATA COLLECTED FOR CY 2014)

ASSOCIATION RESEARCH, INC. (ARI), AN INDEPENDENT SURVEY RESEARCH ORGANIZATION, IS CONDUCTING THIS CONFIDENTIAL SURVEY FOR THE NAWC. ALL RESPONSES WILL BE KEPT COMPLETELY CONFIDENTIAL.

PLEASE COMPLETE YOUR QUESTIONNAIRE NO LATER THAN JANUARY 25, 2016, EITHER ONLINE OR BY FAX TO 240-268-1267. IF THERE IS A PROBLEM, PLEASE E-MAIL ASSOCIATION RESEARCH, INC., AT info@associationresearch.com

WE ENCOURAGE YOU TO COMPLETE THE SURVEY ONLINE BY GOING TO THE FOLLOWING WEB SITE:
www2.ari-surveys.com/run/nawcsafety2014

NOTE: PLEASE INDICATE "NA" IF YOU CANNOT ANSWER A QUESTION.

1. Do you track injury rates (DART, EMR, ORIR, etc.) 1. Yes 2. No

2. If no to Q. 1, please answer information about workplace injuries (do not double count):
 - a. Number of injuries in 2014 that caused the employee to lose time from work _____
 - b. The total number of days lost (not incidents) in 2014 due to workplace injury or illness _____
 - c. Number of injuries in 2014 where employee did not lose time from work, but could not perform full duties _____
 - d. Number of injuries in 2014 where there was only professional medical treatment, and employee continued to work. _____
 - e. Total average employees for 2014 _____

3. If yes to Q. 1, please answer the following questions:
 - a. 2014 DART Incidence Rate ⁽¹⁾ (OSHA metric – Days Away, Restricted or Transfer)
1. All operations: _____ 2. Contract operations: _____ 3. Regulated operations: _____
 - b. 2014 Lost Time Severity rate ⁽²⁾ (OSHA metric - Rate based on days away due to lost time injury of illness)
1. All operations: _____ 2. Contract operations: _____ 3. Regulated operations: _____
 - c. 2014 Lost Time Incidence Rate ⁽³⁾ (OSHA metric - Rate based on number of Lost Time injuries or illnesses)
1. All operations: _____ 2. Contract operations: _____ 3. Regulated operations: _____
 - d. 2014 Recordable Incidence Rate ⁽⁴⁾ (OSHA metric - recordable incident rate)
1. All operations: _____ 2. Contract operations: _____ 3. Regulated operations: _____
 - e. 2014 EMR (Experience Modification Rate) rated by the National Council on Compensation Insurance (NCCI)
1. All operations: _____ 2. Contract operations: _____ 3. Regulated operations: _____
 - f. Do you have any new acquisitions from the past calendar year that might have adversely impacted your results as reported above? 1. Yes 2. No

4. Does your company have a specific safety policy put in place by management? 1. Yes 2. No

5. Does the policy clearly define employees' accountability for workplace safety at all levels of the organization?
 1. Yes 2. No

6. Does your company have a health and safety program? 1. Yes 2. No

7. Is there a dedicated budget for health and safety programs? 1. Yes 2. No
8. Does your written health and safety program include disciplinary action for violations? 1. Yes 2. No
9. Do you have a health and safety audit and inspection program? 1. Yes 2. No
10. Does your written health and safety program include investigation of all accidents and recommend corrective actions? 1. Yes 2. No
11. Does your written health and safety program include proactive safety activities (e.g. near miss/safety observations programs)? 1. Yes 2. No
- a. Do you track safety observations, near miss, or hazards? 1. Yes 2. No
- b. How many safety observations, near miss, or hazards were reported in 2014? _____
- c. Please indicate the numbers and types of safety observations, near miss, or hazards reported in 2014:

12. Does management set goals and targets for safety performance? 1. Yes 2. No
13. Do you have a safety committee? 1. Yes 2. No
14. What is the annual average number of hours of health and safety training received by employees, excluding office/clerical? 1. Less than 5 hours 2. 5-10 hours 3. Greater than 10 hours
15. What is your total number of employees?
 1. Less than 250 2. 250 – 1,000 3. Greater than 1,000
16. Do you have a contractor safety program? 1. Yes 2. No
17. Do you have a cybersecurity plan/program in place? 1. Yes 2. No
18. Are you aware of the NIST Framework for cybersecurity? 1. Yes 2. No
19. Have you implemented any of the recommendations outlined in the NIST Framework? 1. Yes 2. No
17. What can NAWC do to improve this survey? Please explain: _____

Formulas for Rate Calculations (Survey Q. 3a-d)

(1) DART Rate	Total Number of CASES with Days Away from Work, Restrictions or Transfers X 200,000 ----- Total Hours Worked for Calendar Year
(2) Lost-Time Severity Rate	Total Number of DAYS Away from Work X 200,000 ----- Total Hours Worked for Calendar Year
(3) Lost-Time Rate	Total Number of Days Away from Work CASES X 200,000 ----- Total Hours Worked for Calendar Year
(4) Recordable Incidence Rate	Total Number of all OSHA Recordable CASES X 200,000 ----- Total Hours Worked for Calendar Year <i>Note: Includes; Medical Treatment, Restrictions, and Days Away from Work (Lost-Time) cases.</i>

THANK YOU VERY MUCH FOR COMPLETING THIS SURVEY.

IF YOU ARE NOT COMPLETING THE SURVEY ONLINE, PLEASE FAX YOUR QUESTIONNAIRE DIRECTLY TO:



FAX: 240-268-1267

**ASSOCIATION RESEARCH, INC.
 910 CLOPPER ROAD, SUITE 210N, GAITHERSBURG MD 20878**

DEADLINE: JANUARY 25, 2016

**IF YOU PREFER TO COMPLETE THE SURVEY ONLINE, PLEASE DO SO BY GOING TO THIS WEBSITE:
www2.ari-surveys.com/run/nawcsafety2014**

APPENDIX B

Background

		Total	
		Count Percent	Count
All Respondents		100.0%	20
Track injury rates	Yes	90.0%	18
	No	10.0%	2
New acquisitions from past calendar year that might have adversely impacted results		100.0%	18
Company has specific safety policy put in place by management	Yes	90.0%	18
	No	10.0%	2
Policy defines employee accountability for workplace safety	Yes	85.0%	17
	No	15.0%	3
Company has health and safety program	Yes	95.0%	19
	No	5.0%	1
Dedicated budget for health and safety programs	Yes	80.0%	16
	No	20.0%	4
Written health & safety program includes disciplinary action for violations	Yes	75.0%	15
	No	25.0%	5
Have health & safety audit & inspection program	Yes	80.0%	16
	No	20.0%	4
Written health & safety program includes investigation & recommends corrective actions	Yes	85.0%	17
	No	15.0%	3
Written health & safety program includes proactive safety activities	Yes	75.0%	15
	No	25.0%	5
Track safety observation, near miss, or hazards	Yes	50.0%	10
	No	50.0%	10
Management sets goals & targets for safety performance	Yes	75.0%	15
	No	25.0%	5
Have a safety committee	Yes	78.9%	15
	No	21.1%	4
Annual avg. # of hours of health & safety training received by most employees	Less than 5 hours	5.0%	1
	5-10 hours	25.0%	5
	Greater than 10 hours	70.0%	14
Total number of employees	Less than 250	15.0%	3
	250-1,000	45.0%	9
	Greater than 1,000	40.0%	8
Have a contractor safety program	Yes	60.0%	12
	No	40.0%	8
Have a cybersecurity plan/program in place	Yes	95.0%	19
	No	5.0%	1
Aware of the NIST Framework for cybersecurity	Yes	60.0%	12
	No	40.0%	8
Have implemented any of the recommendations outlined in the NIST Framework	Yes	56.3%	9
	No	43.8%	7

Number of safety observations, near miss, or hazards reported in 2014

		Number of safety observations, near miss, or hazards reported in 2014
		Average
All Respondents		967.8
New acquisitions from past calendar year that might have adversely impacted results	No	967.8
Company has specific safety policy put in place by management	Yes	967.8
Policy defines employee accountability for workplace safety	Yes	967.8
Company has health and safety program	Yes	967.8
Dedicated budget for health and safety programs	Yes	967.8
Written health & safety program includes disciplinary action for violations	Yes	874.5
	No	1,341.0
Have health & safety audit & inspection program	Yes	967.8
Written health & safety program includes investigation & recommends corrective actions	Yes	967.8
Written health & safety program includes proactive safety activities	Yes	967.8
Track safety observation, near miss, or hazards	Yes	967.8
Management sets goals & targets for safety performance	Yes	967.8
Have a safety committee	Yes	967.8
Annual avg. # of hours of health & safety training received by most employees	5-10 hours	1,424.5
	Greater than 10 hours	663.3
Total number of employees	250-1,000	777.0
	Greater than 1,000	1,254.0
Have a contractor safety program	Yes	967.8
Have a cybersecurity plan/program in place	Yes	967.8
Aware of the NIST Framework for cybersecurity	Yes	959.8
	No	1,000.0
Have implemented any of the recommendations outlined in the NIST Framework	Yes	1,227.0
	No	158.0

All Calculated

		Number of safety observations, near miss, or hazards reported in 2014	
		Count	Average
All Respondents		5	967.8
New acquisitions from past calendar year that might have adversely impacted results	No	5	967.8
Company has specific safety policy put in place by management	Yes	5	967.8
Policy defines employee accountability for workplace safety	Yes	5	967.8
Company has health and safety program	Yes	5	967.8
Dedicated budget for health and safety programs	Yes	5	967.8
Written health & safety program includes disciplinary action for violations	Yes	4	874.5
	No	1	1,341.0
Have health & safety audit & inspection program	Yes	5	967.8
Written health & safety program includes investigation & recommends corrective actions	Yes	5	967.8
Written health & safety program includes proactive safety activities	Yes	5	967.8
Track safety observation, near miss, or hazards	Yes	5	967.8
Management sets goals & targets for safety performance	Yes	5	967.8
Have a safety committee	Yes	5	967.8
Annual avg. # of hours of health & safety training received by most employees	5-10 hours	2	1,424.5
	Greater than 10 hours	3	663.3
Total number of employees	250-1,000	3	777.0
	Greater than 1,000	2	1,254.0
Have a contractor safety program	Yes	5	967.8
Have a cybersecurity plan/program in place	Yes	5	967.8
Aware of the NIST Framework for cybersecurity	Yes	4	959.8
	No	1	1,000.0
Have implemented any of the recommendations outlined in the NIST Framework	Yes	3	1,227.0
	No	1	158.0

All Calculated

		Number of safety observations, near miss, or hazards reported in 2014	
		Median	Mean
All Respondents		1,000.0	967.8
New acquisitions from past calendar year that might have adversely impacted results	No	1,000.0	967.8
Company has specific safety policy put in place by management	Yes	1,000.0	967.8
Policy defines employee accountability for workplace safety	Yes	1,000.0	967.8
Company has health and safety program	Yes	1,000.0	967.8
Dedicated budget for health and safety programs	Yes	1,000.0	967.8
Written health & safety program includes disciplinary action for violations	Yes	916.0	874.5
	No	1,341.0	1,341.0
Have health & safety audit & inspection program	Yes	1,000.0	967.8
Written health & safety program includes investigation & recommends corrective actions	Yes	1,000.0	967.8
Written health & safety program includes proactive safety activities	Yes	1,000.0	967.8
Track safety observation, near miss, or hazards	Yes	1,000.0	967.8
Management sets goals & targets for safety performance	Yes	1,000.0	967.8
Have a safety committee	Yes	1,000.0	967.8
Annual avg. # of hours of health & safety training received by most employees	5-10 hours	1,424.5	1,424.5
	Greater than 10 hours	832.0	663.3
Total number of employees	250-1,000	832.0	777.0
	Greater than 1,000	1,254.0	1,254.0
Have a contractor safety program	Yes	1,000.0	967.8
Have a cybersecurity plan/program in place	Yes	1,000.0	967.8
Aware of the NIST Framework for cybersecurity	Yes	1,086.5	959.8
	No	1,000.0	1,000.0
Have implemented any of the recommendations outlined in the NIST Framework	Yes	1,341.0	1,227.0
	No	158.0	158.0

Q11B Number of safety observations, near miss, or hazards reported in 2014

		Number of safety observations, near miss, or hazards reported in 2014		
		Mean	Median	Count
All Respondents		967.8	1,000.0	5
New acquisitions from past calendar year that might have adversely impacted results	No	967.8	1,000.0	5
Company has specific safety policy put in place by management	Yes	967.8	1,000.0	5
Policy defines employee accountability for workplace safety	Yes	967.8	1,000.0	5
Company has health and safety program	Yes	967.8	1,000.0	5
Dedicated budget for health and safety programs	Yes	967.8	1,000.0	5
Written health & safety program includes disciplinary action for violations	Yes	874.5	916.0	4
	No	1,341.0	1,341.0	1
Have health & safety audit & inspection program	Yes	967.8	1,000.0	5
Written health & safety program includes investigation & recommends corrective actions	Yes	967.8	1,000.0	5
Written health & safety program includes proactive safety activities	Yes	967.8	1,000.0	5
Track safety observation, near miss, or hazards	Yes	967.8	1,000.0	5
Management sets goals & targets for safety performance	Yes	967.8	1,000.0	5
Have a safety committee	Yes	967.8	1,000.0	5
Annual avg. # of hours of health & safety training received by most employees	5-10 hours	1,424.5	1,424.5	2
	Greater than 10 hours	663.3	832.0	3
Total number of employees	250-1,000	777.0	832.0	3
	Greater than 1,000	1,254.0	1,254.0	2
Have a contractor safety program	Yes	967.8	1,000.0	5
Have a cybersecurity plan/program in place	Yes	967.8	1,000.0	5
Aware of the NIST Framework for cybersecurity	Yes	959.8	1,086.5	4
	No	1,000.0	1,000.0	1
Have implemented any of the recommendations outlined in the NIST Framework	Yes	1,227.0	1,341.0	3
	No	158.0	158.0	1

All Operations

		2014 DART Incidence Rate for All Operations	2014 Lost Time Severity Rate for All Operations	2014 Lost Time Incidence Rate for All Operations	2014 Recordable Incidence Rate for All Operations	2014 EMR (Experience Modification Rate) for All Operations
		Average	Average	Average	Average	Average
All Respondents		2.9	38.3	2.2	4.8	0.8
New acquisitions from past calendar year that might have adversely impacted results	No	2.9	38.3	2.2	4.8	0.8
Company has specific safety policy put in place by management	Yes	2.8	38.3	2.2	4.7	0.8
	No	3.8			6.6	
Policy defines employee accountability for workplace safety	Yes	2.9	41.0	2.3	4.9	0.8
	No	2.9	8.6	1.4	4.3	0.7
Company has health and safety program	Yes	2.9	38.3	2.2	4.8	0.8
Dedicated budget for health and safety programs	Yes	2.7	30.1	2.2	4.7	0.8
	No	4.7	128.0	2.6	5.5	0.8
Written health & safety program includes disciplinary action for violations	Yes	2.9	40.2	2.4	4.9	0.8
	No	2.9	32.6	1.2	4.5	0.7
Have health & safety audit & inspection program	Yes	2.7	33.1	2.2	4.5	0.8
	No	3.8	94.9	1.7	6.6	
Written health & safety program includes investigation & recommends corrective actions	Yes	2.8	38.3	2.2	4.7	0.8
	No	3.8			5.2	0.8
Written health & safety program includes proactive safety activities	Yes	2.9	30.2	1.7	4.9	0.8
	No	3.1	127.0	7.0	4.2	0.8
Track safety observation, near miss, or hazards	Yes	2.6	21.4	1.7	4.8	0.8
	No	3.3	72.0	3.0	4.7	0.8
Management sets goals & targets for safety performance	Yes	2.6	20.9	1.6	4.0	0.8
	No	3.9	90.6	4.8	8.0	0.8
Have a safety committee	Yes	2.7	33.2	2.4	4.7	0.8
	No	3.5	68.3	2.0	5.3	0.8
Annual avg. # of hours of health & safety training received by most employees	5-10 hours	2.7	46.1	2.6	4.3	0.9
	Greater than 10 hours	3.0	34.4	1.9	5.0	0.8
Total number of employees	Less than 250	1.9	8.6	1.4	2.9	0.7
	250-1,000	2.9	54.9	4.0	5.5	0.8
	Greater than 1,000	3.1	29.4	1.1	4.7	0.8
Have a contractor safety program	Yes	2.7	33.5	1.8	4.5	0.8
	No	3.3	52.6	3.4	5.2	0.8
Have a cybersecurity plan/program in place	Yes	2.9	39.5	2.3	4.8	0.8
	No	3.1	24.4	1.0	4.8	0.9
Aware of the NIST Framework for cybersecurity	Yes	2.8	39.5	2.5	4.8	0.8
	No	3.5	24.4	0.7	4.7	0.8
Have implemented any of the recommendations outlined in the NIST Framework	Yes	2.8	52.0	2.1	4.2	0.8
	No	3.1	14.1	3.4	6.1	0.8

Contract Operations

		2014 DART Incidence Rate for Contract Operations	2014 Lost Time Severity Rate for Contract Operations	2014 Lost Time Incidence Rate for Contract Operations	2014 Recordable Incidence Rate for Contract Operations	2014 EMR (Experience Modification Rate) for Contract Operations
		Average	Average	Average	Average	Average
All Respondents		2.4	40.0	1.9	3.0	0.6
New acquisitions from past calendar year that might have adversely impacted results	No	2.4	40.0	1.9	3.0	0.6
Company has specific safety policy put in place by management	Yes	2.4	40.0	1.9	3.0	0.6
Policy defines employee accountability for workplace safety	Yes	2.4	40.0	1.9	3.0	0.6
Company has health and safety program	Yes	2.4	40.0	1.9	3.0	0.6
Dedicated budget for health and safety programs	Yes	2.4	40.0	1.9	3.0	0.6
Written health & safety program includes disciplinary action for violations	Yes	1.0	0.8	0.3	1.8	0.6
	No	5.2	79.1	5.2	4.2	
Have health & safety audit & inspection program	Yes	2.4	40.0	1.9	3.0	0.6
Written health & safety program includes investigation & recommends corrective actions	Yes	2.4	40.0	1.9	3.0	0.6
Written health & safety program includes proactive safety activities	Yes	2.4	40.0	1.9	3.0	0.6
Track safety observation, near miss, or hazards	Yes	2.4	40.0	1.9	3.0	0.6
Management sets goals & targets for safety performance	Yes	2.4	40.0	1.9	3.0	0.6
Have a safety committee	Yes	2.4	40.0	1.9	3.0	0.6
Annual avg. # of hours of health & safety training received by most employees	5-10 hours	3.2	79.1	2.8	3.8	
	Greater than 10 hours	0.8	0.8	0.2	2.2	0.6
Total number of employees	250-1,000	5.2	157.3	5.2	5.2	
	Greater than 1,000	1.0	0.8	0.3	2.3	0.6
Have a contractor safety program	Yes	2.4	40.0	1.9	3.0	0.6
Have a cybersecurity plan/program in place	Yes	2.4	40.0	1.9	3.0	0.6
Aware of the NIST Framework for cybersecurity	Yes	2.4	40.0	1.9	3.0	0.6
Have implemented any of the recommendations outlined in the NIST Framework	Yes	2.4	53.0	1.9	3.0	0.6

Regulated Operations

		2014 DART Incidence Rate for Regulated Operations	2014 Lost Time Severity Rate for Regulated Operations	2014 Lost Time Incidence Rate for Regulated Operations	2014 Recordable Incidence Rate for Regulated Operations	2014 EMR (Experience Modification Rate) for Regulated Operations
		Average	Average	Average	Average	Average
All Respondents		2.0	27.9	1.1	3.3	0.8
New acquisitions from past calendar year that might have adversely impacted results	No	2.0	27.9	1.1	3.3	0.8
Company has specific safety policy put in place by management	Yes	2.0	27.9	1.1	3.3	0.8
Policy defines employee accountability for workplace safety	Yes	2.0	27.9	1.1	3.3	0.8
Company has health and safety program	Yes	2.0	27.9	1.1	3.3	0.8
Dedicated budget for health and safety programs	No	2.0	27.9	1.0	3.4	0.8
Written health & safety program includes disciplinary action for violations	Yes	1.8	19.4	1.2	2.8	0.8
	No	2.3	33.6	1.1	3.8	0.8
Have health & safety audit & inspection program	Yes	1.5	11.2	1.0	2.7	0.8
	No	3.8	94.9	1.7	6.6	0.8
Written health & safety program includes investigation & recommends corrective actions	Yes	2.0	27.9	1.1	3.3	0.8
Written health & safety program includes proactive safety activities	Yes	2.0	27.9	1.0	3.4	0.8
	No	2.0	27.9	1.5	2.7	0.8
Track safety observation, near miss, or hazards	Yes	2.0	27.9	1.0	3.4	0.8
	No	2.0	27.9	1.5	2.7	0.8
Management sets goals & targets for safety performance	Yes	2.0	27.9	1.1	3.3	0.8
Have a safety committee	Yes	2.0	27.9	1.1	3.3	0.8
Annual avg. # of hours of health & safety training received by most employees	5-10 hours	1.6	21.1	0.8	2.3	0.8
	Greater than 10 hours	2.3	32.4	1.4	3.9	0.8
Total number of employees	250-1,000	1.3	2.6	0.9	2.2	0.8
	Greater than 1,000	3.1	44.8	1.4	4.5	0.8
Have a contractor safety program	Yes	2.0	27.9	1.0	3.4	0.8
	No	2.0	27.9	1.5	2.7	0.8
Have a cybersecurity plan/program in place	Yes	2.0	27.9	1.1	3.3	0.8
	No	2.0	27.9	1.0	3.4	0.8
Aware of the NIST Framework for cybersecurity	Yes	2.0	27.9	1.0	3.4	0.8
	No	2.0	27.9	1.5	2.7	0.8
Have implemented any of the recommendations outlined in the NIST Framework	Yes	2.0	34.5	1.0	3.4	0.8
	No	2.0	34.5	1.5	2.7	0.8

All Operations

		2014 DART Incidence Rate for All Operations		2014 Lost Time Severity Rate for All Operations		2014 Lost Time Incidence Rate for All Operations		2014 Recordable Incidence Rate for All Operations		2014 EMR (Experience Modification Rate) for All Operations	
		Count	Average	Count	Average	Count	Average	Count	Average	Count	Average
		All Respondents		12	2.9	12	38.3	11	2.2	16	4.8
New acquisitions from past calendar year that might have adversely impacted results	No	12	2.9	12	38.3	11	2.2	16	4.8	10	0.8
Company has specific safety policy put in place by management	Yes	11	2.8	12	38.3	11	2.2	15	4.7	10	0.8
	No	1	3.8	0	0	0	0	1	6.6	0	0
Policy defines employee accountability for workplace safety	Yes	10	2.9	11	41.0	10	2.3	14	4.9	9	0.8
	No	2	2.9	1	8.6	1	1.4	2	4.3	1	0.7
Company has health and safety program	Yes	12	2.9	12	38.3	11	2.2	16	4.8	10	0.8
	No	11	2.7	11	30.1	10	2.2	14	4.7	8	0.8
Dedicated budget for health and safety programs	Yes	1	4.7	1	128.0	1	2.6	2	5.5	2	0.8
	No	9	2.9	9	40.2	9	2.4	12	4.9	9	0.8
Written health & safety program includes disciplinary action for violations	Yes	3	2.9	3	32.6	2	1.2	4	4.5	1	0.7
	No	10	2.7	11	33.1	10	2.2	14	4.5	10	0.8
Have health & safety audit & inspection program	Yes	2	3.8	1	94.9	1	1.7	2	6.6	0	0
	No	11	2.8	12	38.3	11	2.2	14	4.7	9	0.8
Written health & safety program includes investigation & recommends corrective actions	Yes	1	3.8	0	0	0	0	2	5.2	1	0.8
	No	11	2.9	11	30.2	10	1.7	13	4.9	8	0.8
Written health & safety program includes proactive safety activities	Yes	1	3.1	1	127.0	1	7.0	3	4.2	2	0.8
	No	7	2.6	8	21.4	7	1.7	9	4.8	5	0.8
Track safety observation, near miss, or hazards	Yes	5	3.3	4	72.0	4	3.0	7	4.7	5	0.8
	No	9	2.6	9	20.9	9	1.6	13	4.0	8	0.8
Management sets goals & targets for safety performance	Yes	3	3.9	3	90.6	2	4.8	3	8.0	2	0.8
	No	8	2.7	9	33.2	8	2.4	12	4.7	7	0.8
Have a safety committee	Yes	3	3.5	2	68.3	2	2.0	3	5.3	2	0.8
	No	4	2.7	4	46.1	4	2.6	5	4.3	3	0.9
Annual avg. # of hours of health & safety training received by most employees	5-10 hours	8	3.0	8	34.4	7	1.9	11	5.0	7	0.8
	Greater than 10 hours	1	1.9	1	8.6	1	1.4	2	2.9	2	0.7
Total number of employees	Less than 250	5	2.9	5	54.9	4	4.0	6	5.5	3	0.8
	250-1,000	6	3.1	6	29.4	6	1.1	8	4.7	5	0.8
	Greater than 1,000	8	2.7	9	33.5	8	1.8	10	4.5	6	0.8
Have a contractor safety program	Yes	4	3.3	3	52.6	3	3.4	6	5.2	4	0.8
	No	11	2.9	11	39.5	10	2.3	15	4.8	9	0.8
Have a cybersecurity plan/program in place	Yes	1	3.1	1	24.4	1	1.0	1	4.8	1	0.9
	No	10	2.8	11	39.5	9	2.5	11	4.8	7	0.8
Aware of the NIST Framework for cybersecurity	Yes	2	3.5	1	24.4	2	0.7	5	4.7	3	0.8
	No	8	2.8	8	52.0	8	2.1	8	4.2	5	0.8
Have implemented any of the recommendations outlined in the NIST Framework	Yes	4	3.1	3	14.1	2	3.4	5	6.1	3	0.8
	No	8	2.8	8	52.0	8	2.1	8	4.2	5	0.8

Contract Operations

		2014 DART Incidence Rate for Contract Operations		2014 Lost Time Severity Rate for Contract Operations		2014 Lost Time Incidence Rate for Contract Operations		2014 Recordable Incidence Rate for Contract Operations		2014 EMR (Experience Modification Rate) for Contract Operations	
		Count	Average	Count	Average	Count	Average	Count	Average	Count	Average
All Respondents		3	2.4	4	40.0	3	1.9	4	3.0	1	0.6
New acquisitions from past calendar year that might have adversely impacted results	No	3	2.4	4	40.0	3	1.9	4	3.0	1	0.6
Company has specific safety policy put in place by management	Yes	3	2.4	4	40.0	3	1.9	4	3.0	1	0.6
Policy defines employee accountability for workplace safety	Yes	3	2.4	4	40.0	3	1.9	4	3.0	1	0.6
Company has health and safety program	Yes	3	2.4	4	40.0	3	1.9	4	3.0	1	0.6
Dedicated budget for health and safety programs	Yes	3	2.4	4	40.0	3	1.9	4	3.0	1	0.6
Written health & safety program includes disciplinary action for violations	Yes	2	1.0	2	0.8	2	0.3	2	1.8	1	0.6
	No	1	5.2	2	79.1	1	5.2	2	4.2	0	
Have health & safety audit & inspection program	Yes	3	2.4	4	40.0	3	1.9	4	3.0	1	0.6
Written health & safety program includes investigation & recommends corrective actions	Yes	3	2.4	4	40.0	3	1.9	4	3.0	1	0.6
Written health & safety program includes proactive safety activities	Yes	3	2.4	4	40.0	3	1.9	4	3.0	1	0.6
Track safety observation, near miss, or hazards	Yes	3	2.4	4	40.0	3	1.9	4	3.0	1	0.6
Management sets goals & targets for safety performance	Yes	3	2.4	4	40.0	3	1.9	4	3.0	1	0.6
Have a safety committee	Yes	3	2.4	4	40.0	3	1.9	4	3.0	1	0.6
Annual avg. # of hours of health & safety training received by most employees	5-10 hours	2	3.2	2	79.1	2	2.8	2	3.8	0	
	Greater than 10 hours	1	0.8	2	0.8	1	0.2	2	2.2	1	0.6
Total number of employees	250-1,000	1	5.2	1	157.3	1	5.2	1	5.2	0	
	Greater than 1,000	2	1.0	3	0.8	2	0.3	3	2.3	1	0.6
Have a contractor safety program	Yes	3	2.4	4	40.0	3	1.9	4	3.0	1	0.6
Have a cybersecurity plan/program in place	Yes	3	2.4	4	40.0	3	1.9	4	3.0	1	0.6
Aware of the NIST Framework for cybersecurity	Yes	3	2.4	4	40.0	3	1.9	4	3.0	1	0.6
Have implemented any of the recommendations outlined in the NIST Framework	Yes	3	2.4	3	53.0	3	1.9	3	3.0	1	0.6

Regulated Operations

		2014 DART Incidence Rate for Regulated Operations		2014 Lost Time Severity Rate for Regulated Operations		2014 Lost Time Incidence Rate for Regulated Operations		2014 Recordable Incidence Rate for Regulated Operations		2014 EMR (Experience Modification Rate) for Regulated Operations	
		Count	Average	Count	Average	Count	Average	Count	Average	Count	Average
All Respondents		5	2.0	5	27.9	5	1.1	6	3.3	1	0.8
New acquisitions from past calendar year that might have adversely impacted results	No	5	2.0	5	27.9	5	1.1	6	3.3	1	0.8
Company has specific safety policy put in place by management	Yes	5	2.0	5	27.9	5	1.1	6	3.3	1	0.8
Policy defines employee accountability for workplace safety	Yes	5	2.0	5	27.9	5	1.1	6	3.3	1	0.8
Company has health and safety program	Yes	5	2.0	5	27.9	5	1.1	6	3.3	1	0.8
Dedicated budget for health and safety programs	Yes	4	2.0	5	27.9	4	1.0	5	3.4	1	0.8
	No	1	2.0	0		1	1.5	1	2.7	0	
Written health & safety program includes disciplinary action for violations	Yes	3	1.8	2	19.4	3	1.2	3	2.8	1	0.8
	No	2	2.3	3	33.6	2	1.1	3	3.8	0	
Have health & safety audit & inspection program	Yes	4	1.5	4	11.2	4	1.0	5	2.7	1	0.8
	No	1	3.8	1	94.9	1	1.7	1	6.6	0	
Written health & safety program includes investigation & recommends corrective actions	Yes	5	2.0	5	27.9	5	1.1	6	3.3	1	0.8
Written health & safety program includes proactive safety activities	Yes	4	2.0	5	27.9	4	1.0	5	3.4	1	0.8
	No	1	2.0	0		1	1.5	1	2.7	0	
Track safety observation, near miss, or hazards	Yes	4	2.0	5	27.9	4	1.0	5	3.4	1	0.8
	No	1	2.0	0		1	1.5	1	2.7	0	
Management sets goals & targets for safety performance	Yes	5	2.0	5	27.9	5	1.1	6	3.3	1	0.8
Have a safety committee	Yes	5	2.0	5	27.9	5	1.1	6	3.3	1	0.8
Annual avg. # of hours of health & safety training received by most employees	5-10 hours	2	1.6	2	21.1	2	0.8	2	2.3	0	
	Greater than 10 hours	3	2.3	3	32.4	3	1.4	4	3.9	1	0.8
Total number of employees	250-1,000	3	1.3	2	2.6	3	0.9	3	2.2	1	0.8
	Greater than 1,000	2	3.1	3	44.8	2	1.4	3	4.5	0	
Have a contractor safety program	Yes	4	2.0	5	27.9	4	1.0	5	3.4	1	0.8
	No	1	2.0	0		1	1.5	1	2.7	0	
Have a cybersecurity plan/program in place	Yes	5	2.0	5	27.9	5	1.1	6	3.3	1	0.8
Aware of the NIST Framework for cybersecurity	Yes	4	2.0	5	27.9	4	1.0	5	3.4	1	0.8
	No	1	2.0	0		1	1.5	1	2.7	0	
Have implemented any of the recommendations outlined in the NIST Framework	Yes	4	2.0	4	34.5	4	1.0	4	3.4	1	0.8
	No	1	2.0	0		1	1.5	1	2.7	0	

All Operations

		2014 DART Incidence Rate for All Operations		2014 Lost Time Severity Rate for All Operations		2014 Lost Time Incidence Rate for All Operations		2014 Recordable Incidence Rate for All Operations		2014 EMR (Experience Modification Rate) for All Operations	
		Median	Mean	Median	Mean	Median	Mean	Median	Mean	Median	Mean
		All Respondents		3.1	2.9	19.4	38.3	1.4	2.2	3.6	4.8
New acquisitions from past calendar year that might have adversely impacted results	No	3.1	2.9	19.4	38.3	1.4	2.2	3.6	4.8	0.8	0.8
Company has specific safety policy put in place by management	Yes	3.1	2.8	19.4	38.3	1.4	2.2	3.4	4.7	0.8	0.8
	No	3.8	3.8					6.6	6.6		
Policy defines employee accountability for workplace safety	Yes	3.1	2.9	22.2	41.0	1.4	2.3	3.6	4.9	0.8	0.8
	No	2.9	2.9	8.6	8.6	1.4	1.4	4.3	4.3	0.7	0.7
Company has health and safety program	Yes	3.1	2.9	19.4	38.3	1.4	2.2	3.6	4.8	0.8	0.8
	No	3.1	2.7	16.7	30.1	1.2	2.2	3.3	4.7	0.7	0.8
Dedicated budget for health and safety programs	Yes	4.7	4.7	128.0	128.0	2.6	2.6	5.5	5.5	0.8	0.8
	No	3.1	2.9	22.2	40.2	1.4	2.4	3.5	4.9	0.8	0.8
Written health & safety program includes disciplinary action for violations	Yes	3.8	2.9	1.6	32.6	1.2	1.2	5.0	4.5	0.7	0.7
	No	2.7	2.7	16.7	33.1	1.2	2.2	3.3	4.5	0.8	0.8
Have health & safety audit & inspection program	Yes	3.8	3.8	94.9	94.9	1.7	1.7	6.6	6.6		
	No	3.1	2.8	19.4	38.3	1.4	2.2	3.3	4.7	0.8	0.8
Written health & safety program includes investigation & recommends corrective actions	Yes	3.8	3.8					5.2	5.2	0.8	0.8
	No	3.1	2.9	16.7	30.2	1.2	1.7	3.4	4.9	0.8	0.8
Written health & safety program includes proactive safety activities	Yes	3.1	3.1	127.0	127.0	7.0	7.0	3.8	4.2	0.8	0.8
	No	2.2	2.6	9.1	21.4	1.1	1.7	3.2	4.8	0.7	0.8
Track safety observation, near miss, or hazards	Yes	3.1	3.3	75.7	72.0	2.0	3.0	4.8	4.7	0.8	0.8
	No	2.2	2.6	8.6	20.9	1.1	1.6	3.4	4.0	0.7	0.8
Management sets goals & targets for safety performance	Yes	3.7	3.9	127.0	90.6	4.8	4.8	7.3	8.0	0.8	0.8
	No	2.7	2.7	16.7	33.2	1.4	2.4	3.3	4.7	0.8	0.8
Have a safety committee	Yes	3.8	3.5	68.3	68.3	2.0	2.0	6.6	5.3	0.8	0.8
	No	2.7	2.7	27.9	46.1	1.4	2.6	3.2	4.3	0.8	0.9
Annual avg. # of hours of health & safety training received by most employees	5-10 hours	3.4	3.0	12.7	34.4	1.4	1.9	4.8	5.0	0.7	0.8
	Greater than 10 hours	1.9	1.9	8.6	8.6	1.4	1.4	2.9	2.9	0.7	0.7
	Less than 250	3.1	2.9	16.7	54.9	4.2	4.0	4.4	5.5	0.8	0.8
Total number of employees	250-1,000	3.5	3.1	23.3	29.4	1.0	1.1	4.1	4.7	0.8	0.8
	Greater than 1,000	2.7	2.7	16.7	33.5	1.0	1.8	3.3	4.5	0.7	0.8
	Yes	3.5	3.3	22.2	52.6	1.7	3.4	4.8	5.2	0.8	0.8
Have a contractor safety program	Yes	3.1	2.9	16.7	39.5	1.6	2.3	3.4	4.8	0.8	0.8
	No	3.1	3.1	24.4	24.4	1.0	1.0	4.8	4.8	0.9	0.9
Have a cybersecurity plan/program in place	Yes	2.7	2.8	16.7	39.5	1.7	2.5	3.2	4.8	0.7	0.8
	No	3.5	3.5	24.4	24.4	0.7	0.7	4.8	4.7	0.8	0.8
Aware of the NIST Framework for cybersecurity	Yes	2.7	2.8	27.9	52.0	1.6	2.1	3.1	4.2	0.8	0.8
	No	3.4	3.1	16.7	14.1	3.4	3.4	4.8	6.1	0.8	0.8
Have implemented any of the recommendations outlined in the NIST Framework	Yes										
	No	3.4	3.1	16.7	14.1	3.4	3.4	4.8	6.1	0.8	0.8

Contract Operations

		2014 DART Incidence Rate for Contract Operations		2014 Lost Time Severity Rate for Contract Operations		2014 Lost Time Incidence Rate for Contract Operations		2014 Recordable Incidence Rate for Contract Operations		2014 EMR (Experience Modification Rate) for Contract Operations	
		Median	Mean	Median	Mean	Median	Mean	Median	Mean	Median	Mean
		All Respondents		1.2	2.4	0.9	40.0	0.3	1.9	2.8	3.0
New acquisitions from past calendar year that might have adversely impacted results	No	1.2	2.4	0.9	40.0	0.3	1.9	2.8	3.0	0.6	0.6
Company has specific safety policy put in place by management	Yes	1.2	2.4	0.9	40.0	0.3	1.9	2.8	3.0	0.6	0.6
Policy defines employee accountability for workplace safety	Yes	1.2	2.4	0.9	40.0	0.3	1.9	2.8	3.0	0.6	0.6
Company has health and safety program	Yes	1.2	2.4	0.9	40.0	0.3	1.9	2.8	3.0	0.6	0.6
Dedicated budget for health and safety programs	Yes	1.2	2.4	0.9	40.0	0.3	1.9	2.8	3.0	0.6	0.6
Written health & safety program includes disciplinary action for violations	Yes	1.0	1.0	0.8	0.8	0.3	0.3	1.8	1.8	0.6	0.6
	No	5.2	5.2	79.1	79.1	5.2	5.2	4.2	4.2		
Have health & safety audit & inspection program	Yes	1.2	2.4	0.9	40.0	0.3	1.9	2.8	3.0	0.6	0.6
Written health & safety program includes investigation & recommends corrective actions	Yes	1.2	2.4	0.9	40.0	0.3	1.9	2.8	3.0	0.6	0.6
Written health & safety program includes proactive safety activities	Yes	1.2	2.4	0.9	40.0	0.3	1.9	2.8	3.0	0.6	0.6
Track safety observation, near miss, or hazards	Yes	1.2	2.4	0.9	40.0	0.3	1.9	2.8	3.0	0.6	0.6
Management sets goals & targets for safety performance	Yes	1.2	2.4	0.9	40.0	0.3	1.9	2.8	3.0	0.6	0.6
Have a safety committee	Yes	1.2	2.4	0.9	40.0	0.3	1.9	2.8	3.0	0.6	0.6
Annual avg. # of hours of health & safety training received by most employees	5-10 hours	3.2	3.2	79.1	79.1	2.8	2.8	3.8	3.8		
	Greater than 10 hours	0.8	0.8	0.8	0.8	0.2	0.2	2.2	2.2	0.6	0.6
Total number of employees	250-1,000	5.2	5.2	157.3	157.3	5.2	5.2	5.2	5.2		
	Greater than 1,000	1.0	1.0	0.9	0.8	0.3	0.3	2.4	2.3	0.6	0.6
Have a contractor safety program	Yes	1.2	2.4	0.9	40.0	0.3	1.9	2.8	3.0	0.6	0.6
Have a cybersecurity plan/program in place	Yes	1.2	2.4	0.9	40.0	0.3	1.9	2.8	3.0	0.6	0.6
Aware of the NIST Framework for cybersecurity	Yes	1.2	2.4	0.9	40.0	0.3	1.9	2.8	3.0	0.6	0.6
Have implemented any of the recommendations outlined in the NIST Framework	Yes	1.2	2.4	1.0	53.0	0.3	1.9	2.4	3.0	0.6	0.6

Regulated Operations

		2014 DART Incidence Rate for Regulated Operations		2014 Lost Time Severity Rate for Regulated Operations		2014 Lost Time Incidence Rate for Regulated Operations		2014 Recordable Incidence Rate for Regulated Operations		2014 EMR (Experience Modification Rate) for Regulated Operations	
		Median	Mean	Median	Mean	Median	Mean	Median	Mean	Median	Mean
All Respondents		2.0	2.0	4.3	27.9	1.2	1.1	3.0	3.3	0.8	0.8
New acquisitions from past calendar year that might have adversely impacted results	No	2.0	2.0	4.3	27.9	1.2	1.1	3.0	3.3	0.8	0.8
Company has specific safety policy put in place by management	Yes	2.0	2.0	4.3	27.9	1.2	1.1	3.0	3.3	0.8	0.8
Policy defines employee accountability for workplace safety	Yes	2.0	2.0	4.3	27.9	1.2	1.1	3.0	3.3	0.8	0.8
Company has health and safety program	Yes	2.0	2.0	4.3	27.9	1.2	1.1	3.0	3.3	0.8	0.8
Dedicated budget for health and safety programs	Yes	1.7	2.0	4.3	27.9	1.0	1.0	3.3	3.4	0.8	0.8
	No	2.0	2.0			1.5	1.5	2.7	2.7		
Written health & safety program includes disciplinary action for violations	Yes	2.0	1.8	19.4	19.4	1.2	1.2	2.7	2.8	0.8	0.8
	No	2.3	2.3	4.3	33.6	1.1	1.1	3.6	3.8		
Have health & safety audit & inspection program	Yes	1.5	1.5	2.9	11.2	1.0	1.0	2.7	2.7	0.8	0.8
	No	3.8	3.8	94.9	94.9	1.7	1.7	6.6	6.6		
Written health & safety program includes investigation & recommends corrective actions	Yes	2.0	2.0	4.3	27.9	1.2	1.1	3.0	3.3	0.8	0.8
Written health & safety program includes proactive safety activities	Yes	1.7	2.0	4.3	27.9	1.0	1.0	3.3	3.4	0.8	0.8
	No	2.0	2.0			1.5	1.5	2.7	2.7		
Track safety observation, near miss, or hazards	Yes	1.7	2.0	4.3	27.9	1.0	1.0	3.3	3.4	0.8	0.8
	No	2.0	2.0			1.5	1.5	2.7	2.7		
Management sets goals & targets for safety performance	Yes	2.0	2.0	4.3	27.9	1.2	1.1	3.0	3.3	0.8	0.8
Have a safety committee	Yes	2.0	2.0	4.3	27.9	1.2	1.1	3.0	3.3	0.8	0.8
Annual avg. # of hours of health & safety training received by most employees	5-10 hours	1.6	1.6	21.1	21.1	0.8	0.8	2.3	2.3		
	Greater than 10 hours	2.0	2.3	1.6	32.4	1.5	1.4	3.1	3.9	0.8	0.8
Total number of employees	250-1,000	1.0	1.3	2.6	2.6	0.9	0.9	2.5	2.2	0.8	0.8
	Greater than 1,000	3.1	3.1	38.0	44.8	1.4	1.4	3.6	4.5		
Have a contractor safety program	Yes	1.7	2.0	4.3	27.9	1.0	1.0	3.3	3.4	0.8	0.8
	No	2.0	2.0			1.5	1.5	2.7	2.7		
Have a cybersecurity plan/program in place	Yes	2.0	2.0	4.3	27.9	1.2	1.1	3.0	3.3	0.8	0.8
	No	1.7	2.0	4.3	27.9	1.0	1.0	3.3	3.4	0.8	0.8
Aware of the NIST Framework for cybersecurity	Yes	2.0	2.0			1.5	1.5	2.7	2.7		
	No	1.7	2.0	21.1	34.5	1.0	1.0	2.9	3.4	0.8	0.8
Have implemented any of the recommendations outlined in the NIST Framework	Yes	1.7	2.0			1.5	1.5	2.7	2.7		
	No	2.0	2.0			1.5	1.5	2.7	2.7		

Lost Time Incidence Rate and Recordable Incidence Rate

		Total
All Respondents		20
2014 Lost Time Incidence Rate for All Operations	10th Percentile	0.48
	First Quartile 25%	0.78
	Median 50%	1.44
	Third Quartile 75%	2.57
	90th Percentile	6.76
	Number	11
	Mean	2.20
2014 Recordable Incidence Rate for All Operations	10th Percentile	1.19
	First Quartile 25%	2.10
	Median 50%	3.59
	Third Quartile 75%	6.60
	90th Percentile	11.20
	Number	16
	Mean	4.78

Lost Time Incidence Rate and Recordable Incidence Rate

		Total
All Respondents		20
2014 Lost Time Incidence Rate for Contract Operations	10th Percentile	0.21
	First Quartile 25%	0.21
	Median 50%	0.29
	Third Quartile 75%	.
	90th Percentile	.
	Number	3
	Mean	1.91
2014 Recordable Incidence Rate for Contract Operations	10th Percentile	1.24
	First Quartile 25%	1.54
	Median 50%	2.83
	Third Quartile 75%	4.73
	90th Percentile	.
	Number	4
	Mean	3.03

Lost Time Incidence Rate and Recordable Incidence Rate

		Total
All Respondents		20
2014 Lost Time Incidence Rate for Regulated Operations	10th Percentile	0.43
	First Quartile 25%	0.65
	Median 50%	1.15
	Third Quartile 75%	1.60
	90th Percentile	.
	Number	5
	Mean	1.13
2014 Recordable Incidence Rate for Regulated Operations	10th Percentile	1.28
	First Quartile 25%	2.22
	Median 50%	3.01
	Third Quartile 75%	4.31
	90th Percentile	.
	Number	6
	Mean	3.33

Lost Time Incidence Rate and Recordable Incidence Rate - All

		Total
2014 Lost Time Incidence Rate for All Operations	First Quartile 25%	0.78
	Median 50%	1.44
	Third Quartile 75%	2.57
	Count	11
2014 Recordable Incidence Rate for All Operations	First Quartile 25%	2.10
	Median 50%	3.59
	Third Quartile 75%	6.60
	Count	16

Lost Time Incidence Rate and Recordable Incidence Rate - Contract

		Total
2014 Lost Time Incidence Rate for Contract Operations	First Quartile 25%	0.21
	Median 50%	0.29
	Third Quartile 75%	.
	Count	3
2014 Recordable Incidence Rate for Contract Operations	First Quartile 25%	1.54
	Median 50%	2.83
	Third Quartile 75%	4.73
	Count	4

Lost Time Incidence Rate and Recordable Incidence Rate -

		Total
2014 Lost Time Incidence Rate for Regulated Operations	First Quartile 25%	0.65
	Median 50%	1.15
	Third Quartile 75%	1.60
	Count	5
2014 Recordable Incidence Rate for Regulated Operations	First Quartile 25%	2.22
	Median 50%	3.01
	Third Quartile 75%	4.31
	Count	6